



**Interreg
Europe**



European Union | European Regional Development Fund

LIPOR's Experience from a Peer Review

Webinar: Exploring methods to
increase biowaste collection

Ana Lopes

ana.lopes@lipor.pt

23/04/2024

Our Region

Relevant numbers

8 Municipalities . 646 km² . 1% of the national territory

996 371 inhabitants . ~10% national population

[~550 inh./km² - ~5 600 inh./km²]

>500 000 tons/year of municipal waste production

Part of Porto Metropolitan Area

Large urban centers and some very rural and mountainous areas (beach resorts, hectares of mountains)



© 2023 Lipor

Interreg
Europe



Co-funded by
the European Union

LIPOR's Biowaste

Strategy



More than **40%** of urban waste produced is **biowaste** (29% food waste)

Biowaste reduction and recovery strategy - towards sustainable and circular management

Expansion of the separate collection of biowaste, particularly food waste, at the residential and non-residential sector

Recovery of biowaste from separate collection (carefully selected raw material) at our Composting Plant, producing **high quality organic compost** – **NUTRIMAIS**

Purity of the biowaste collected (reduced presence of contaminants) is a fundamental aspect for the feasibility and success of LIPOR's project



Biowaste Collection

Barriers

Type of flow (degradation, odour nuisance) and the mobilization of the population

Mediterranean diet (vegetables, fruits, sauces and condiments...)

Climate of our region affecting the collection frequency

The deposition of food waste using compostable bags is not allowed at the moment

Lack of urban consistency making it difficult to establish efficient segregation models and collection routes

Lack of resources to increase the collection services performed by the Municipalities (mostly sub-contracted)

Lack of PAYT models (benefits and/or penalties)

Tailored solutions

Efficient collection systems

High capture of food waste

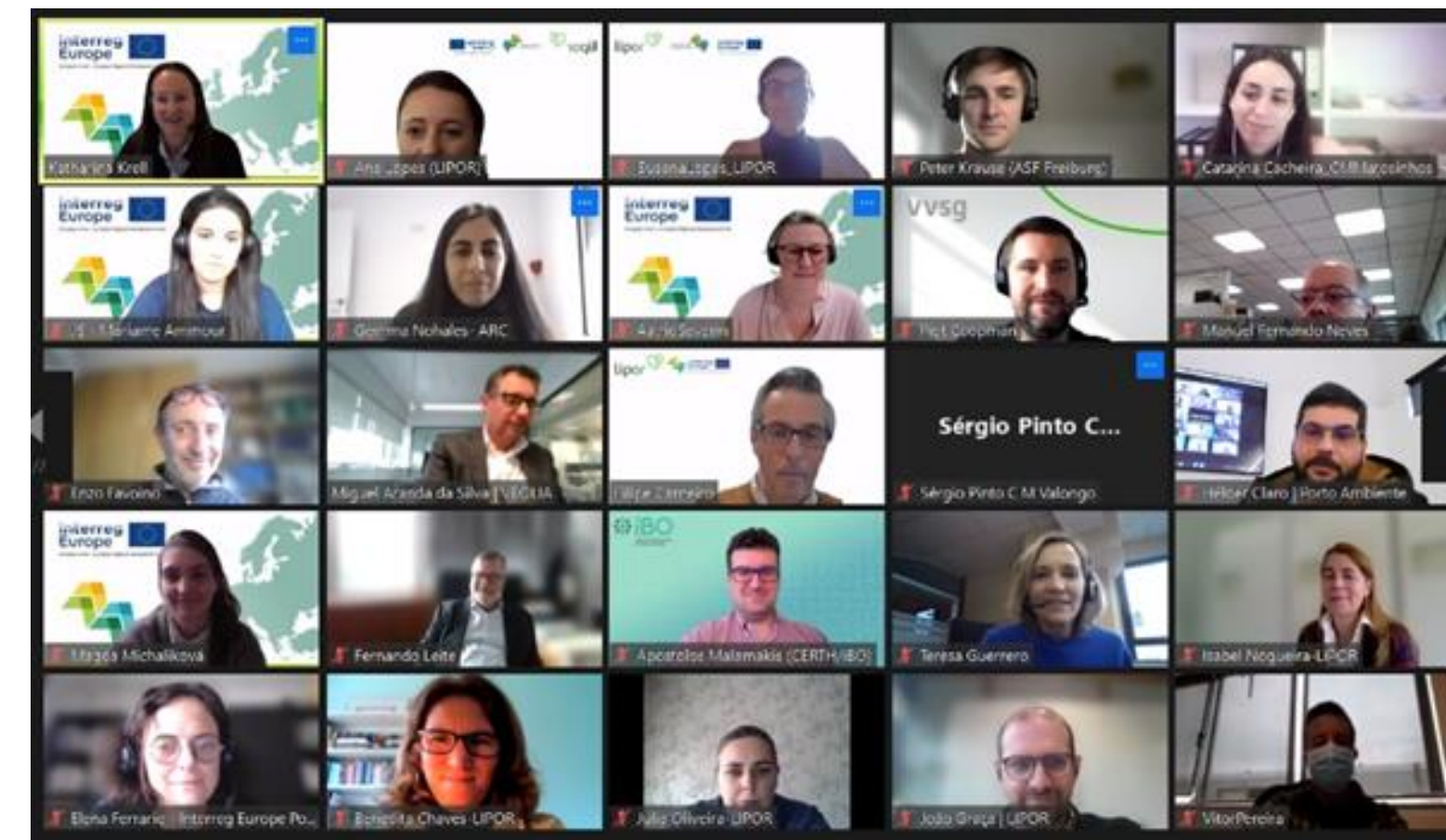
High participation rate of the population

Separation effectiveness



Peer Review

Benefits



Opportunity to make an **in-depth critical thinking** on biowaste separate collection and PAYT systems

Involvement of stakeholders (LIPOR, Associated Municipalities and relevant players of our sector)

Exchange of experiences, **networking** and a learning instrument

Planel of experts and presentation of case studies

Identification of solutions to address our reality and overcome barriers

Make **better-informed** decisions to resolve our challenges



Peer Review

Results



Improvement of our stakeholder's knowledge on successful projects regarding biowaste collection

Overcome concerns and misconceptions

Reach a commitment and creation of a common vision amongst our Municipalities

Development of biowaste prevention projects and communication/awareness raising campaigns

Expansion of biowaste separate collection (pointing out the expansion of the green waste collection)

Expansion of home and community composting

Implementation of decentralized treatment (green waste composting park and microdigester)

PAYT implementation by Maia Municipality

Development of a monitoring model of urban waste (reliable data) to support the Municipalities with PAYT systems



lipor



www.lipor.pt